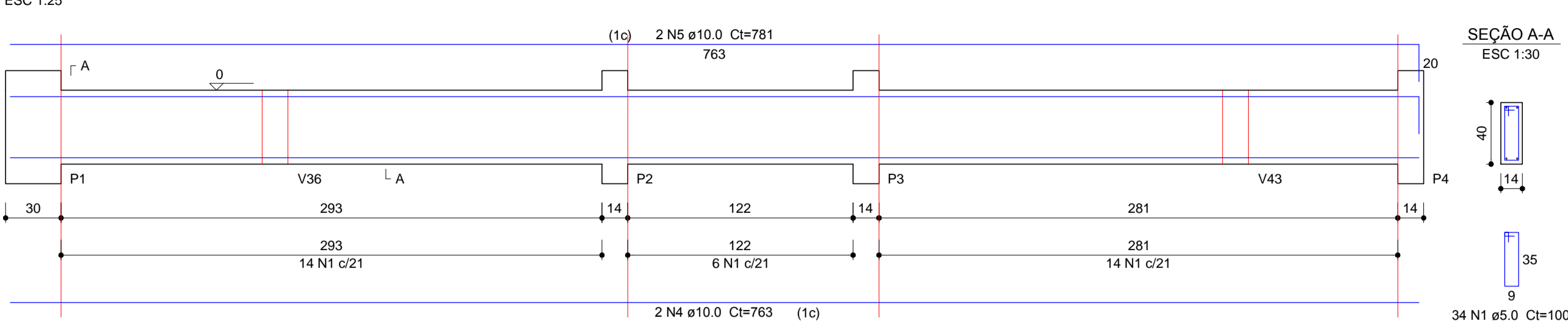
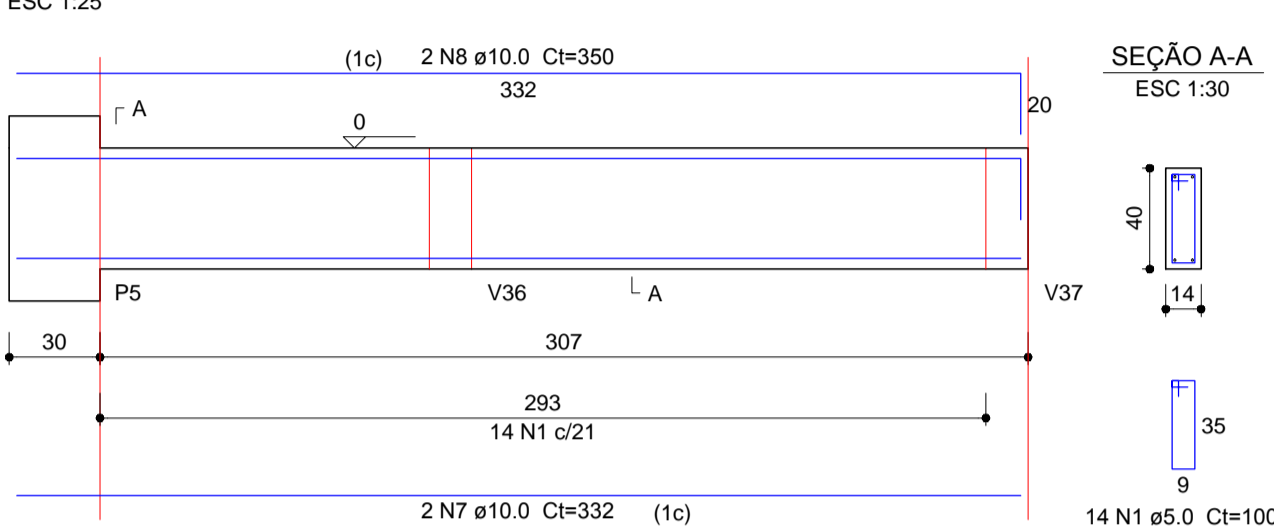


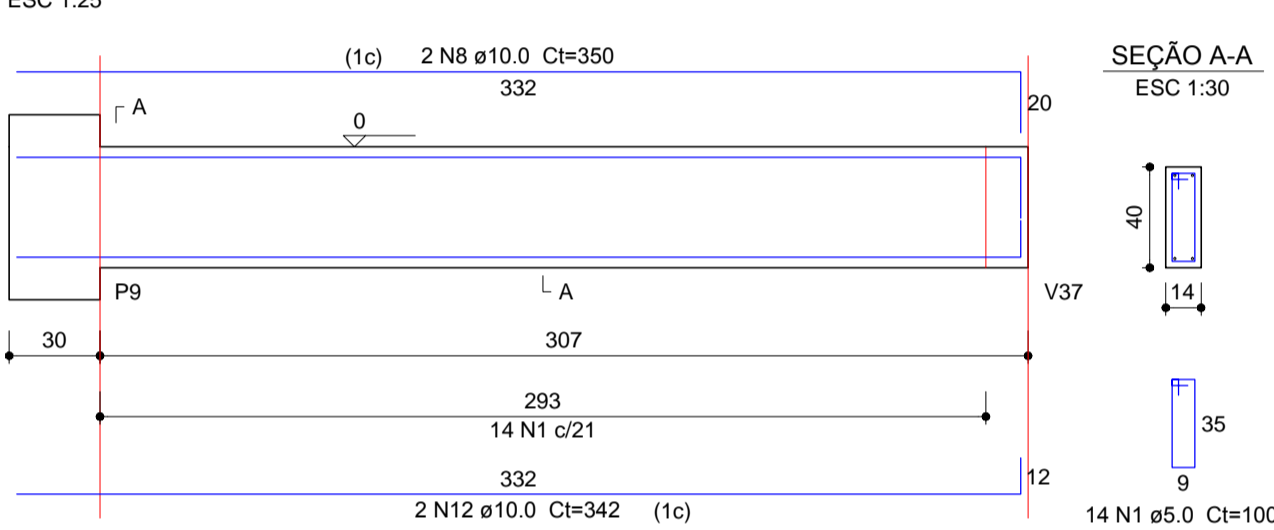
V1 (14 x 40)



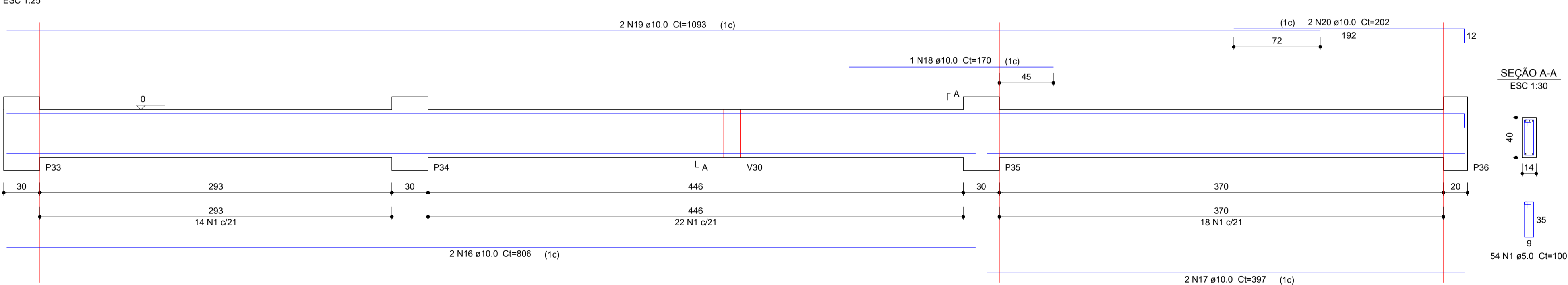
V4 (14 x 40)



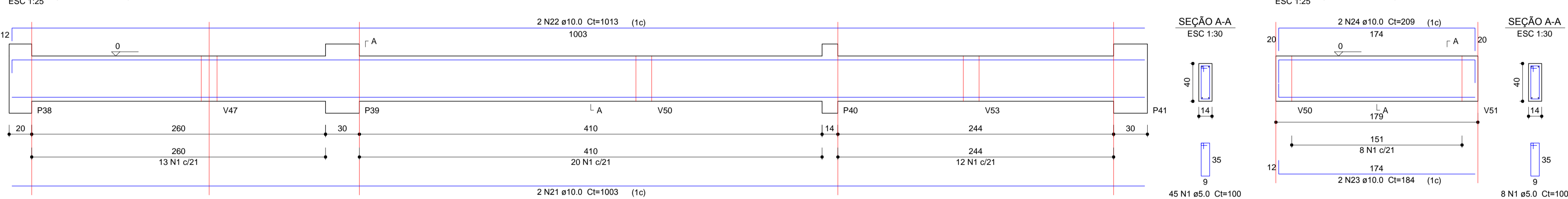
V8 (14 x 40)



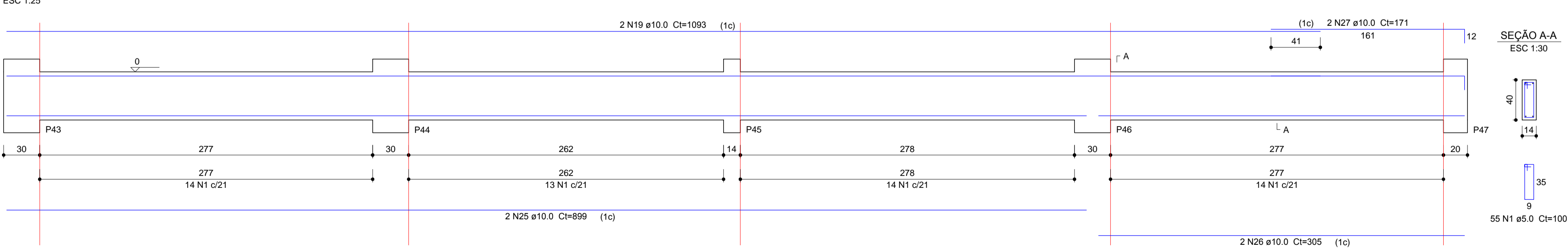
V14 (14 x 40)



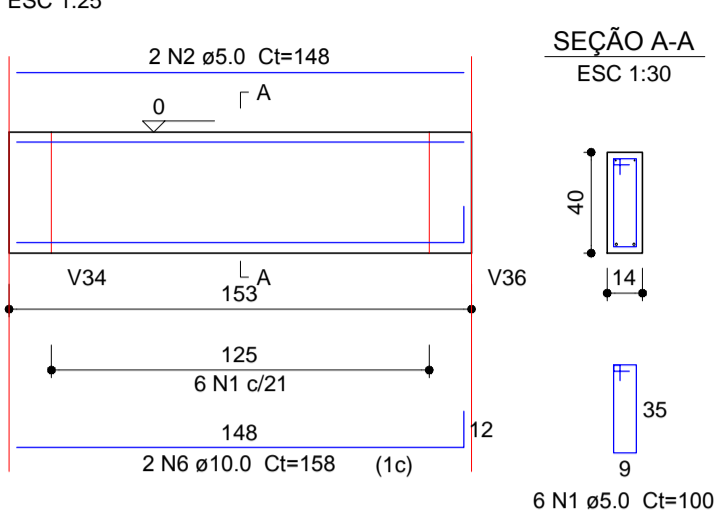
V16 (14 x 40)



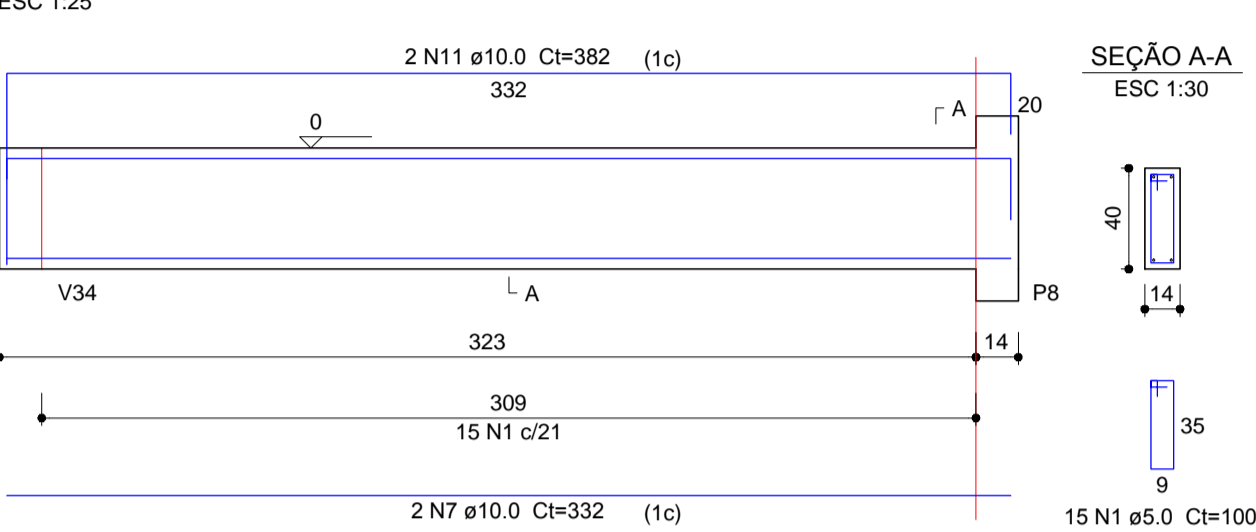
V18 (14 x 40)



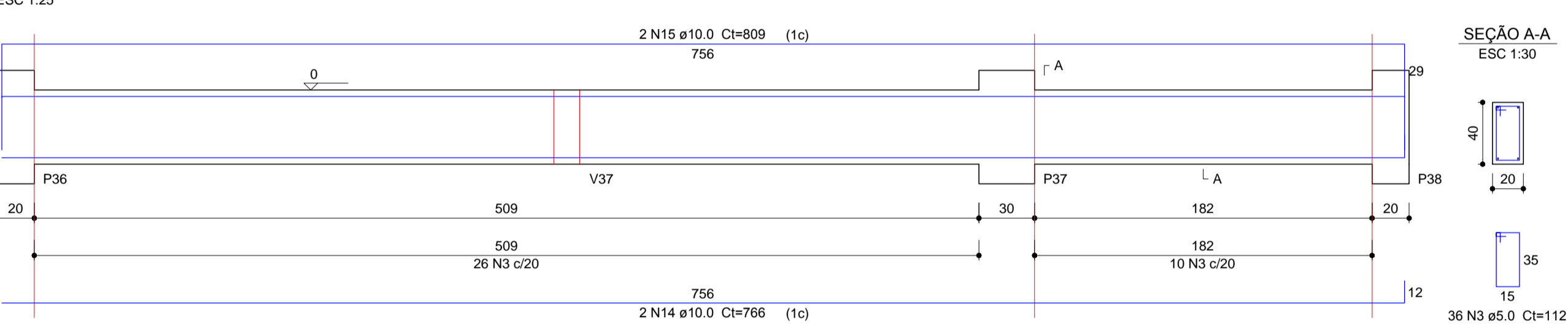
V2 (14 x 40)



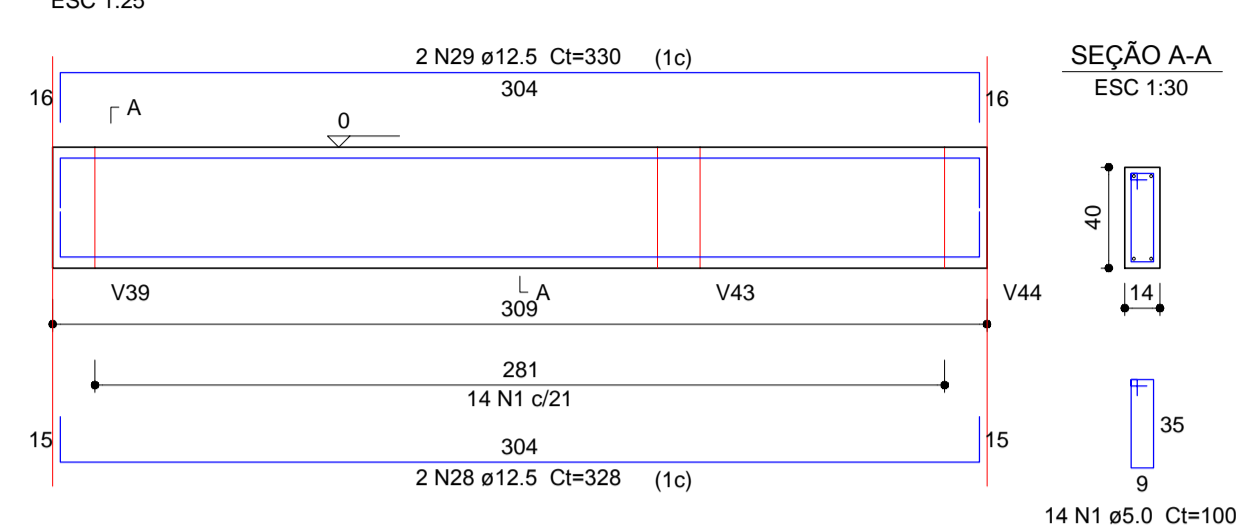
V6 (14 x 40)



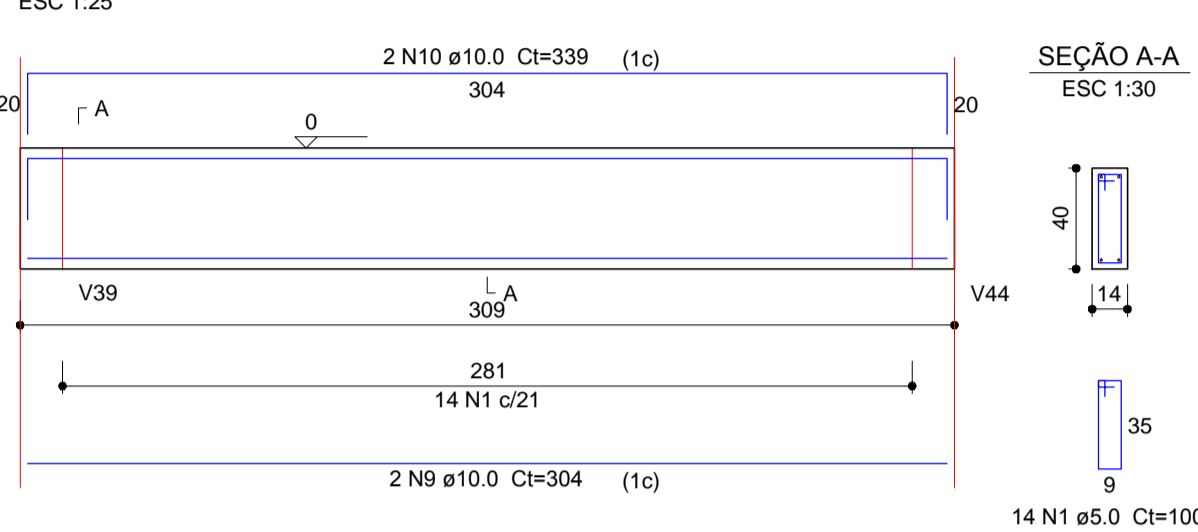
V15 (20 x 40)



V3 (14 x 40)



V7 (14 x 40)



Relação do aço

AÇO	N	DIAM (mm)	QUANT	C.UNIT (cm)	C-TOTAL (cm)
CA60	1	5.0	300	100	30000
	2	5.0	2	148	296
	3	5.0	36	112	4032
CA50	4	10.0	2	763	1526
	5	10.0	2	781	1562
	6	10.0	2	158	316
	7	10.0	4	332	1328
	8	10.0	4	350	1400
	9	10.0	6	304	1824
	10	10.0	4	339	1356
	11	10.0	2	382	764
	12	10.0	2	342	684
	13	10.0	2	322	644
	14	10.0	2	766	1532
	15	10.0	2	809	1618
	16	10.0	2	806	1612
	17	10.0	2	397	794
	18	10.0	1	170	170
	19	10.0	4	1093	4372
	20	10.0	2	202	404
	21	10.0	2	1003	2006
	22	10.0	2	1013	2026
	23	10.0	2	184	368
	24	10.0	2	209	418
	25	10.0	2	899	1798
	26	10.0	2	305	610
	27	10.0	2	171	342
	28	12.5	2	328	656
	29	12.5	2	330	660

Resumo do aço

AÇO	DIAM (mm)	C.TOTAL (m)	PESO + 10 % (kg)
CA50	10.0	294.8	199.9
	12.5	13.2	13.9
CA60	5.0	343.3	58.2
PESO TOTAL (kg)			
CA50	213.8		
CA60	58.2		