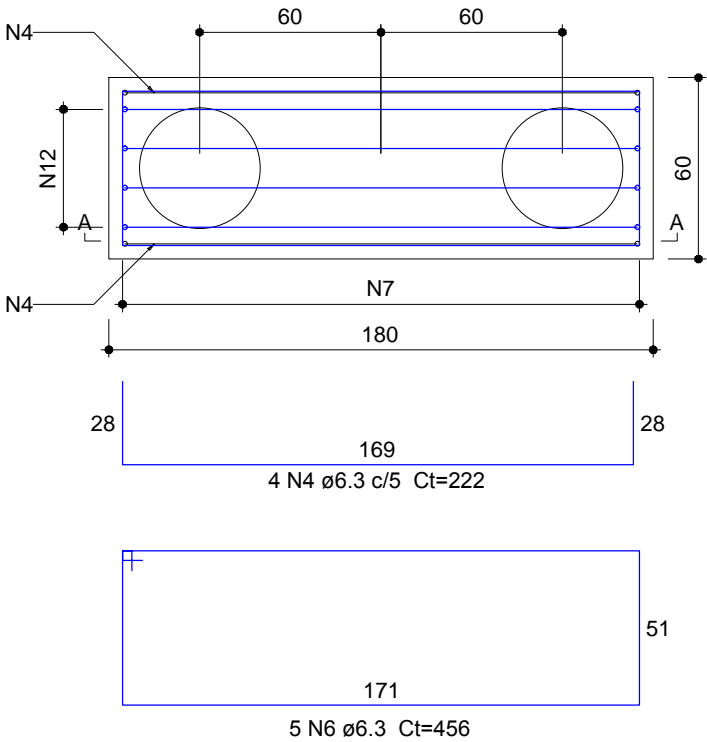
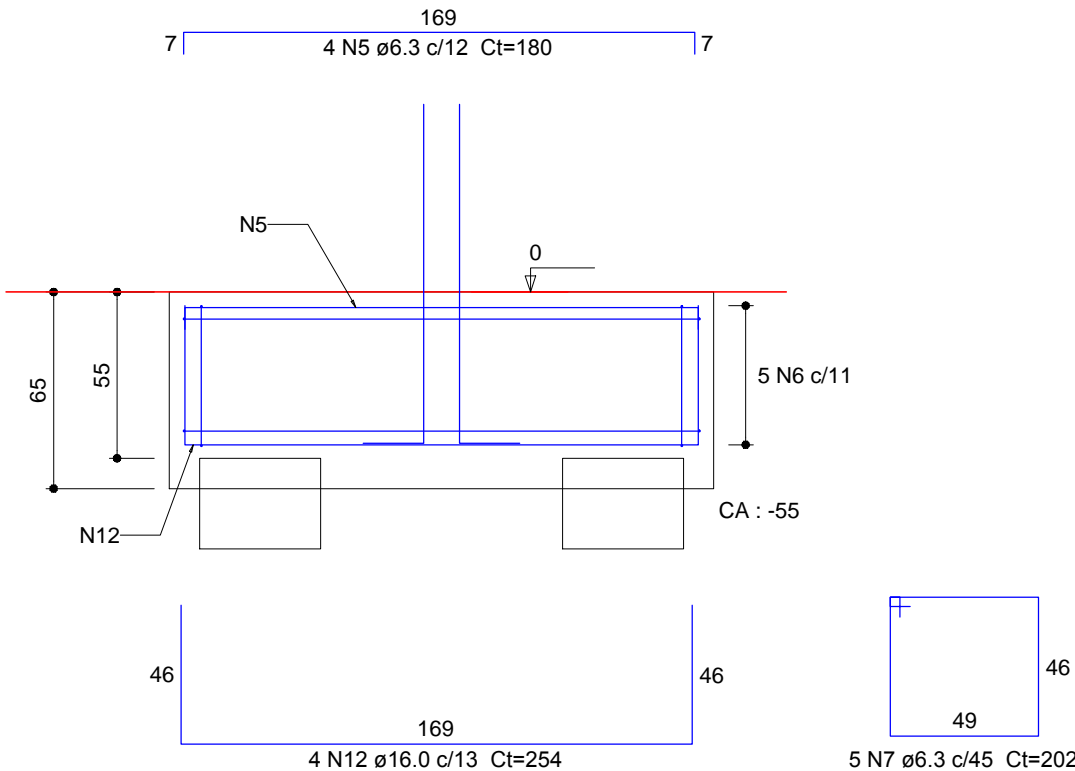


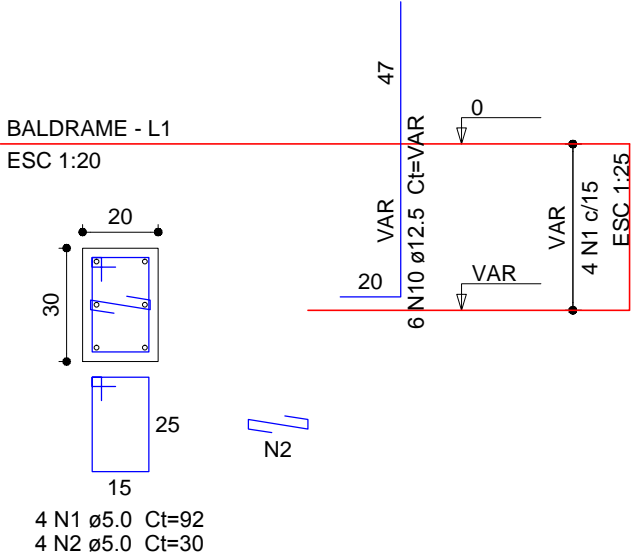
B36=B37=B38=B42=B47=B48=B55=B56
2xC40
PLANTA
ESC 1:25



CORTE A-A
ESC 1:25



P36=P37=P38=P42=P47=P48=P55=
=P56



Relação do aço

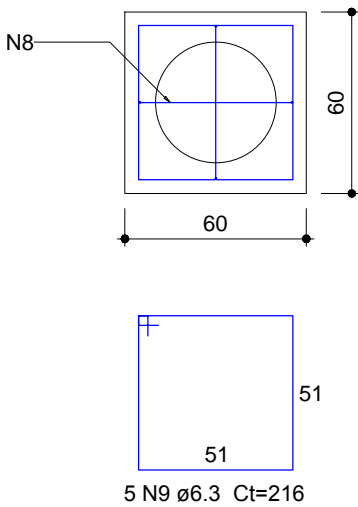
50xB40 8xP36 8xB56 50xP1

AÇO	N	DIAM (mm)	QUANT	C.UNIT (cm)	C.TOTAL (cm)
CA60	1	5.0	32	92	2944
	2	5.0	32	30	960
	3	5.0	200	80	16000
CA50	4	6.3	32	222	7104
	5	6.3	32	180	5760
	6	6.3	40	456	18240
	7	6.3	40	202	8080
	8	6.3	100	192	19200
	9	6.3	250	216	54000
	10	12.5	48	VAR	VAR
	11	12.5	200	VAR	VAR
	12	16.0	32	254	8128

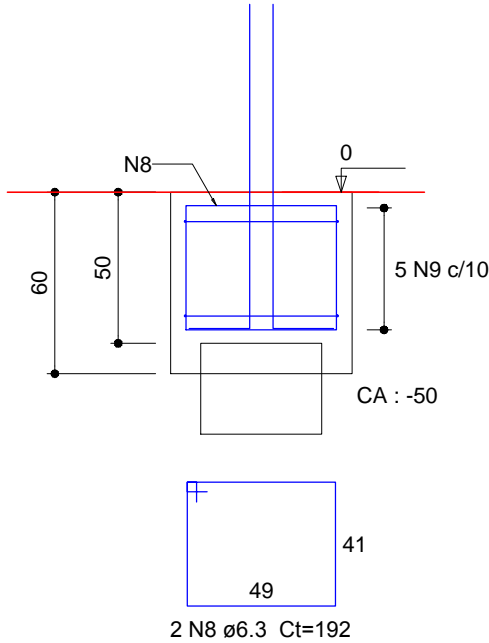
Resumo do aço

AÇO	DIAM (mm)	C.TOTAL (m)	PESO + 10 % (kg)
CA50	6.3	1123.9	302.5
	12.5	275.2	291.6
	16.0	81.3	141.1
CA60	5.0	199.1	33.7
PESO TOTAL (kg)			
CA50	735.2		
CA60	33.7		

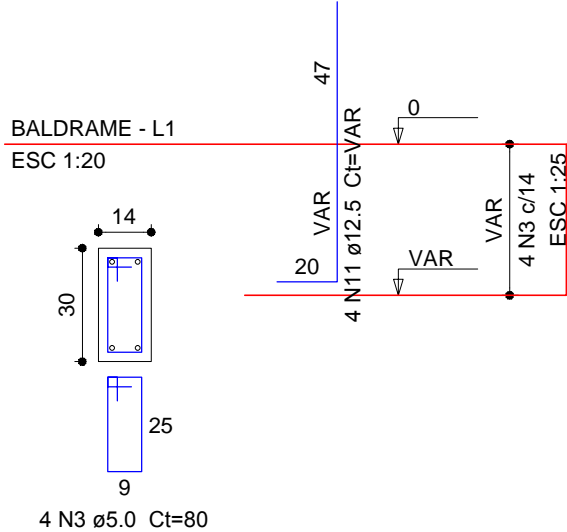
B1=B2=B3=B4=B5=B6=B7=B8=B9=B10=B11=B12
=B13=B14=B15=B16=B17=B18=B19=B20=B21
=B22=B23=B24=B25=B26=B27=B28=B29=B30
=B31=B32=B33=B34=B35=B39=B40=B41=B43
=B44=B45=B46=B49=B50=B51=B52=B53=B54
=B57=B60
1xC40
PLANTA
ESC 1:25



CORTE
ESC 1:25



P1=P2=P3=P4=P5=P6=P7=P8=
=P9=P10=P11=P12=P13=P14=
=P15=P16=P17=P18=P19=P20=
=P21=P22=P23=P24=P25=P26=
=P27=P28=P29=P30=P31=P32=
=P33=P34=P35=P39=P40=P41=
=P43=P44=P45=P46=P49=P50=
=P51=P52=P53=P54=P57=P60



PRÓ-REITORIA DE ADMINISTRAÇÃO
COORDENAÇÃO DE ENGENHARIA E ARQUITETURA
Rua Esmeralda, 430 - Faixa Nova - Camobi - CEP 97110-767 - Santa Maria - Rio Grande do Sul.
Telefone: (55) 3226-6630

OBRA: **CENTRO DE SAÚDE**

LOCAL: **IF FARROUPILHA - CAMPUS SANTO ÂNGELO**

PROJETO: **ESTRUTURAL**

ÁREA: **385,57m²**

CONTEÚDO: **ARMADURA DOS BLOCOS**

ESCALA: **Indicada**

PROPRIETÁRIO:

INSTITUTO FEDERAL FARROUPILHA

DATA: **julho/2018**

DESENHO: **Iagor**

RESPONSÁVEL:

ENG. CIVIL LETÍCIA ZORZELA - CREA RS 150530

PRANCHA: **EST 03/23**