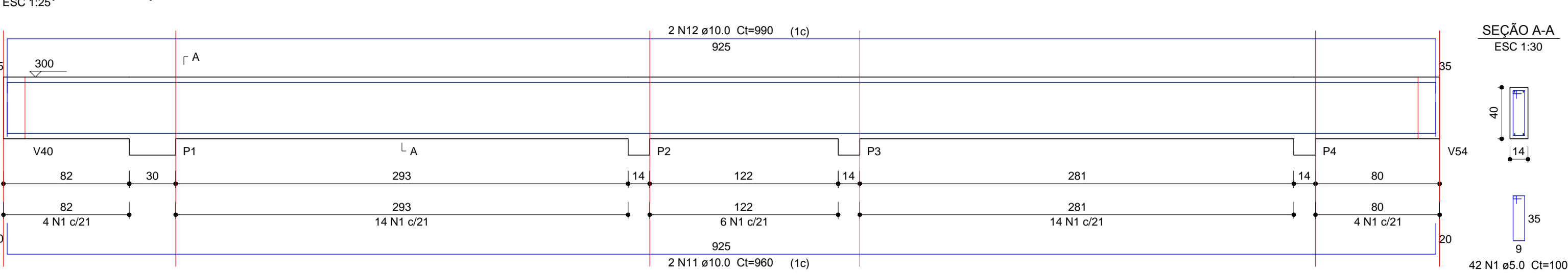
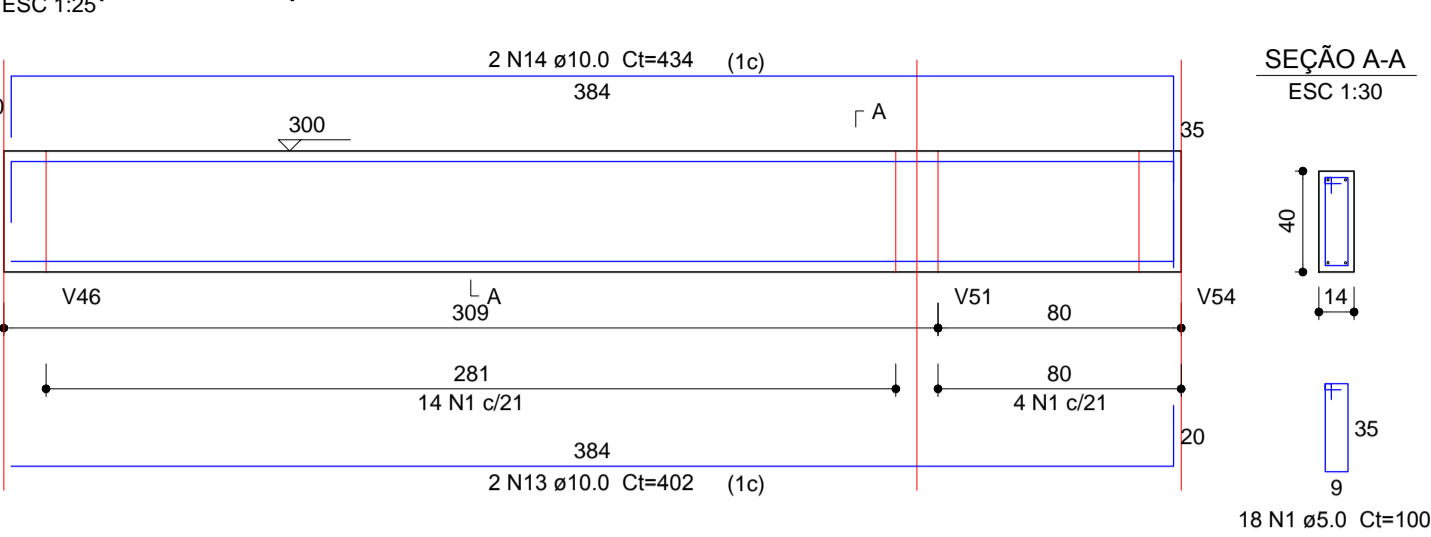


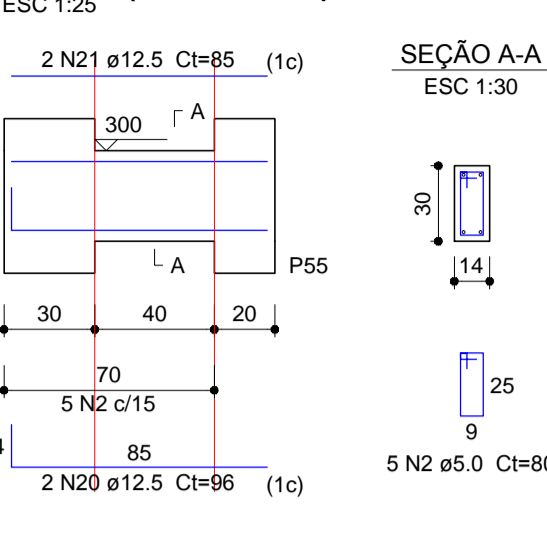
V1 (14 x 40)



V2 (14 x 40)

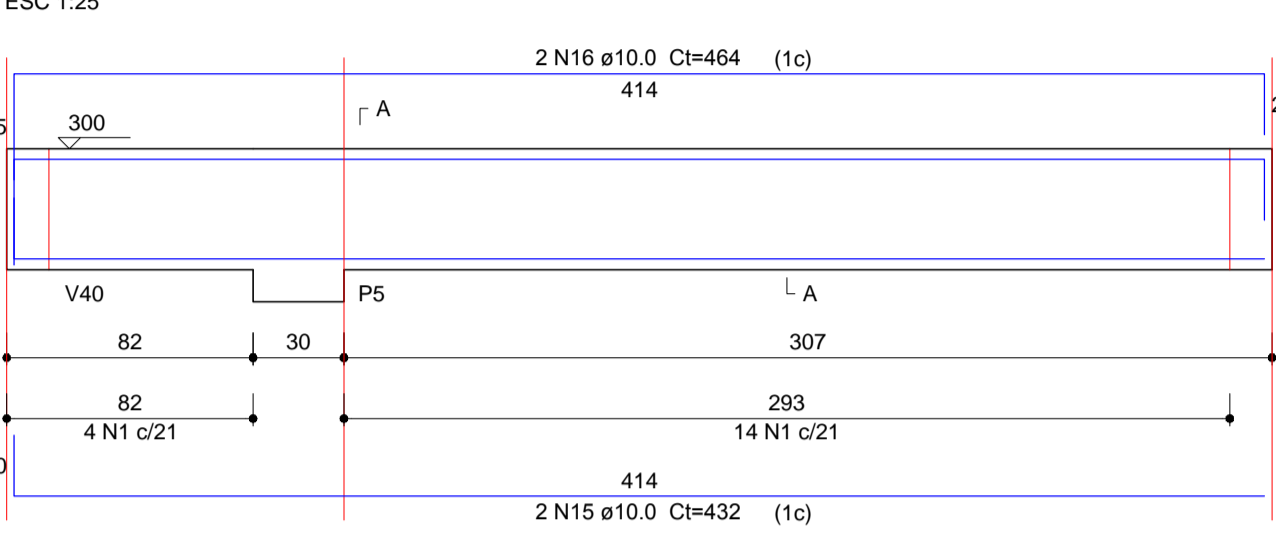


V42 (14 x 30)

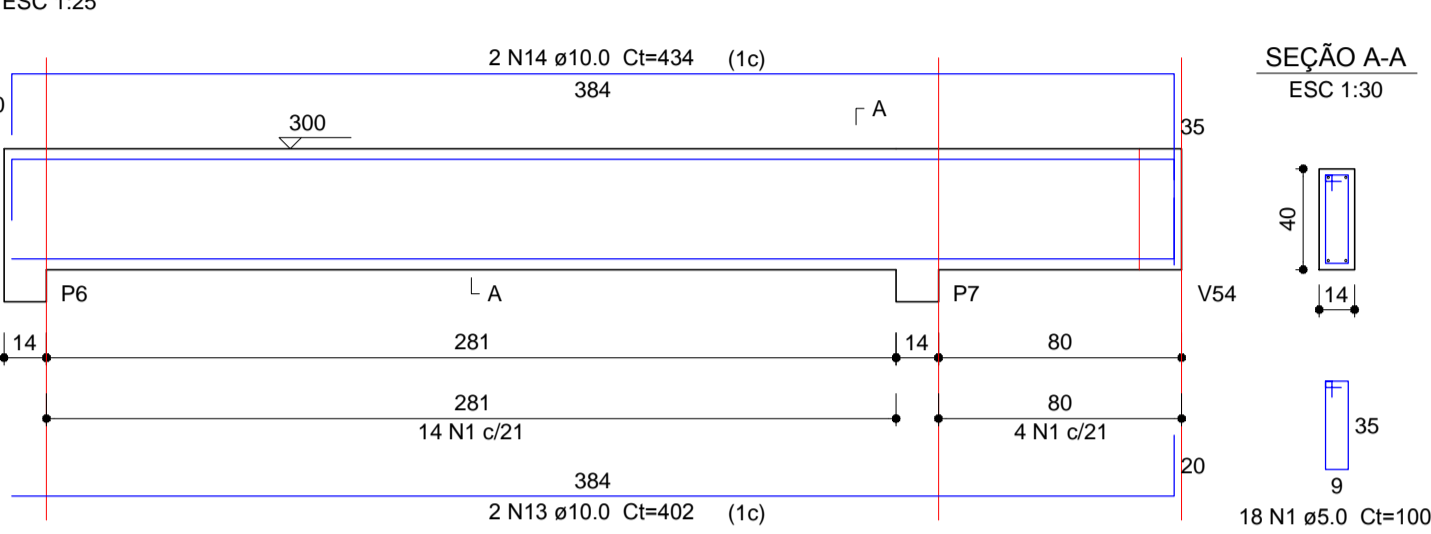


Relação do aço				
AÇO	N	DIAM (mm)	QUANT	C.TOTAL (cm)
CA60	1	5.0	346	100
	2	5.0	5	80
	3	5.0	2	268
CA50	4	8.0	2	1189
	5	8.0	2	964
	6	8.0	2	956
	7	8.0	2	999
	8	8.0	2	337
	9	8.0	1	175
	10	8.0	2	674
	11	10.0	2	960
	12	10.0	2	990
	13	10.0	8	402
	14	10.0	8	434
	15	10.0	4	432
	16	10.0	4	464
	17	10.0	2	585
	18	10.0	2	615
	19	10.0	2	301
	20	12.5	4	96
	21	12.5	2	85
	22	12.5	2	99
	23	12.5	2	809
	24	12.5	2	400
	25	12.5	2	601

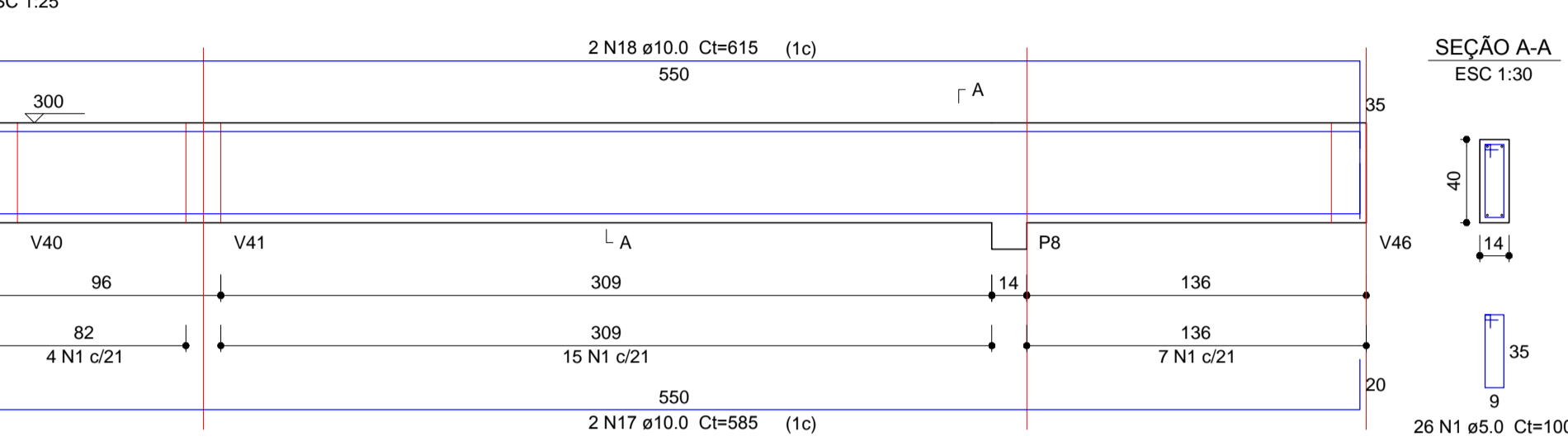
V3 (14 x 40)



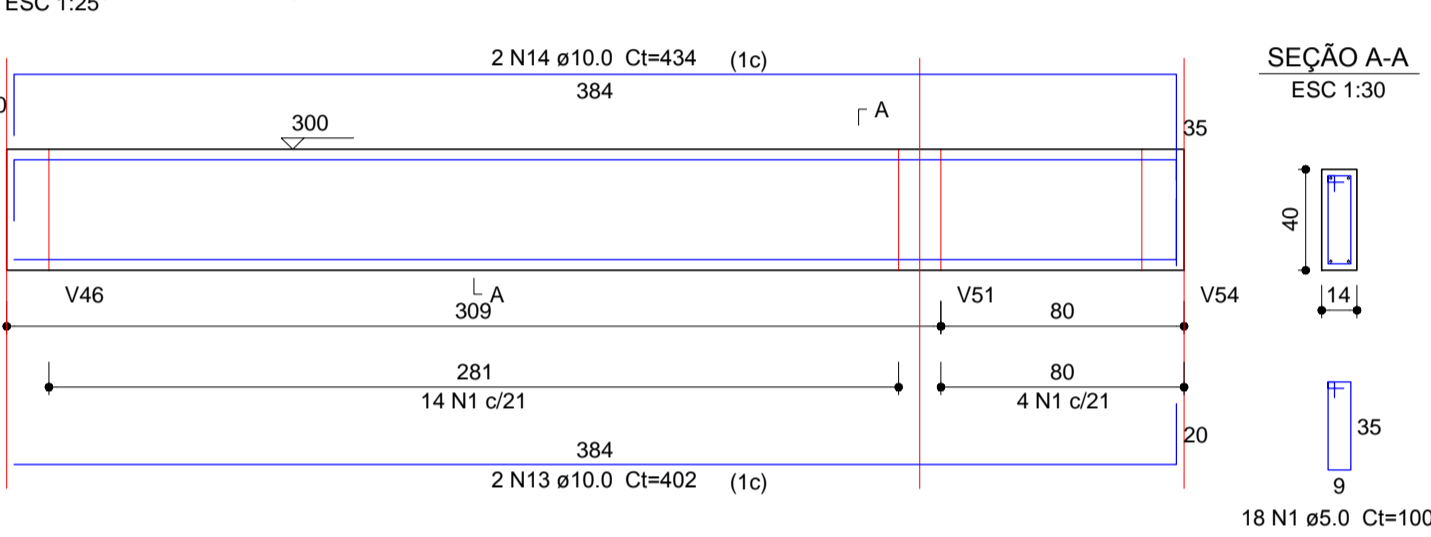
V4 (14 x 40)



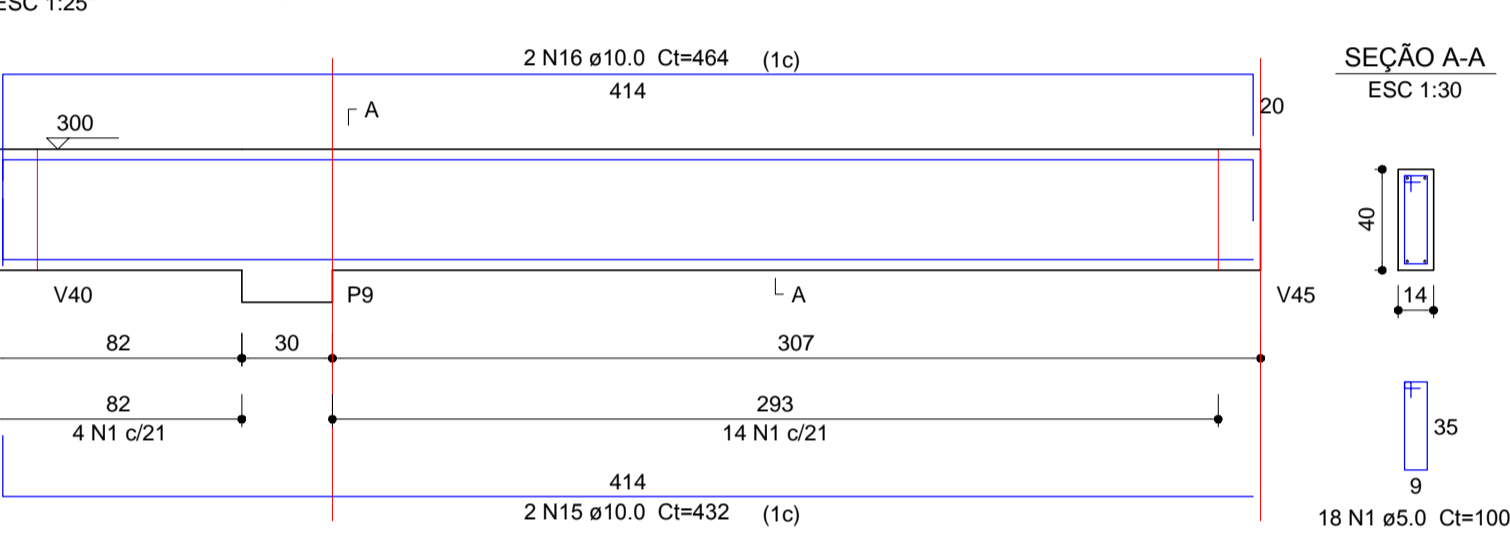
V5 (14 x 40)



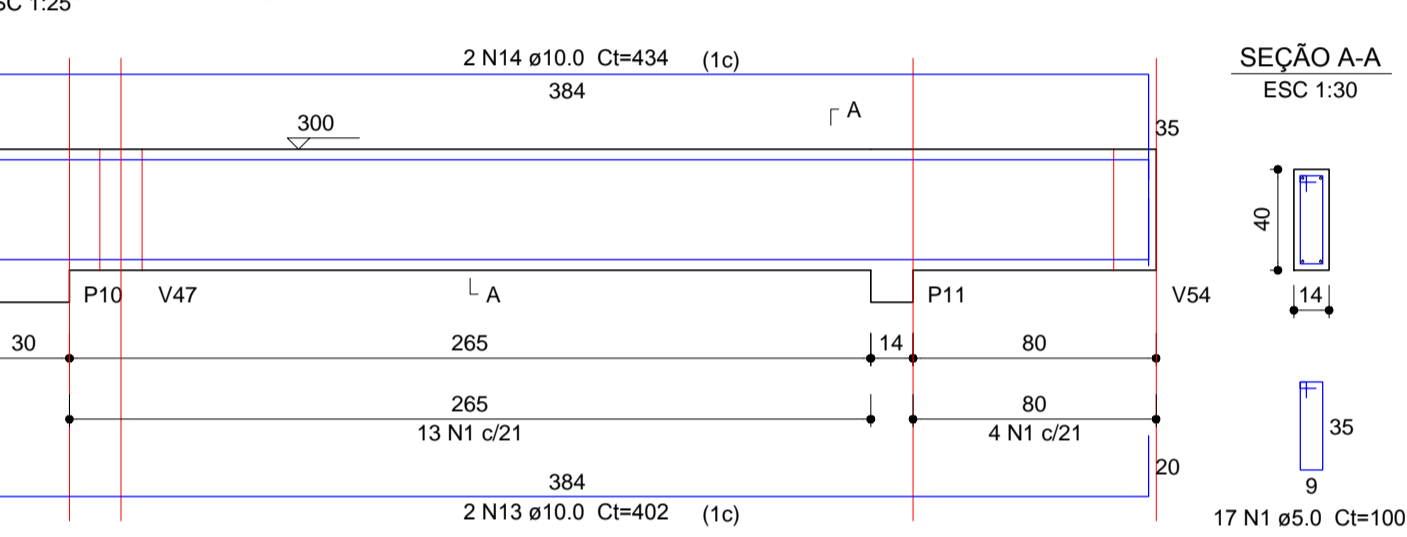
V6 (14 x 40)



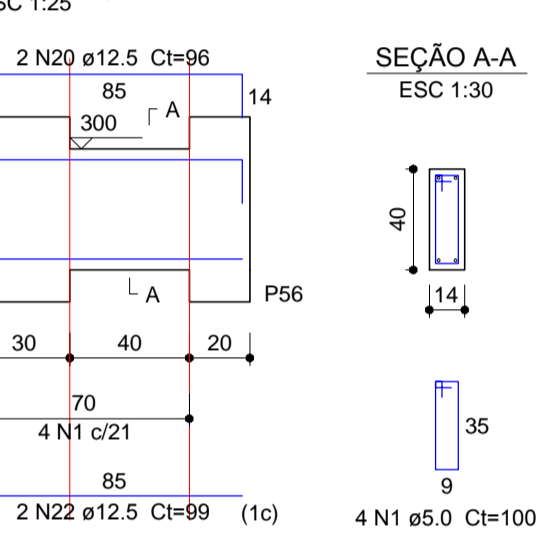
V7 (14 x 40)



V8 (14 x 40)



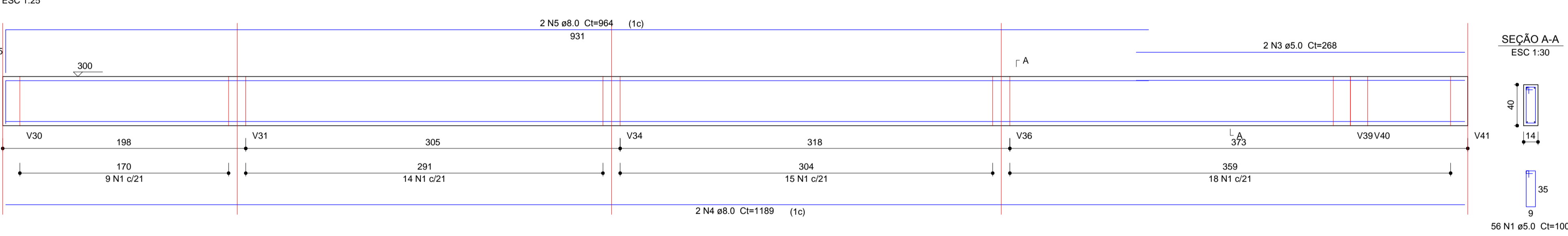
V52 (14 x 40)



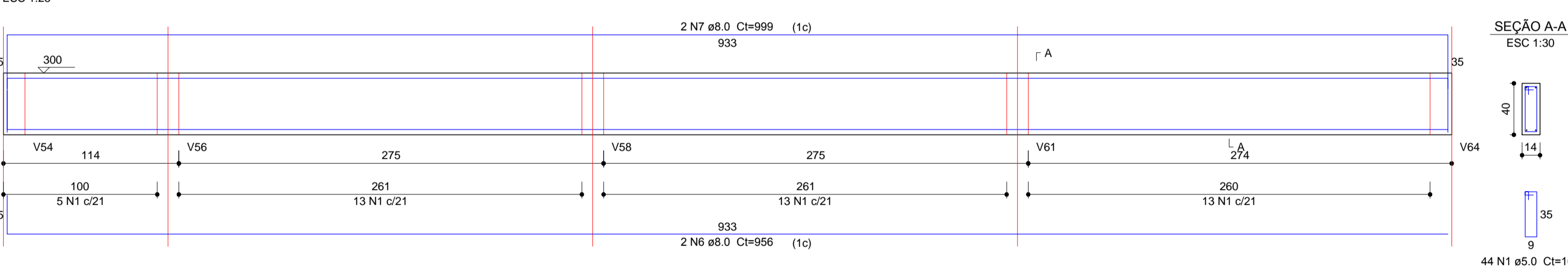
Resumo do aço			
AÇO	DIAM (mm)	C.TOTAL (m)	PESO + 10 % (kg)
CA50	8.0	104.2	45.2
	10.0	171.8	116.5
	12.5	43.8	46.3
CA60	5.0	355.4	60.3
PESO TOTAL (kg)			
CA50		208	
CA60		60.3	

Volume de concreto (C-25) = 4.3 m³
Área de forma = 72.24 m²

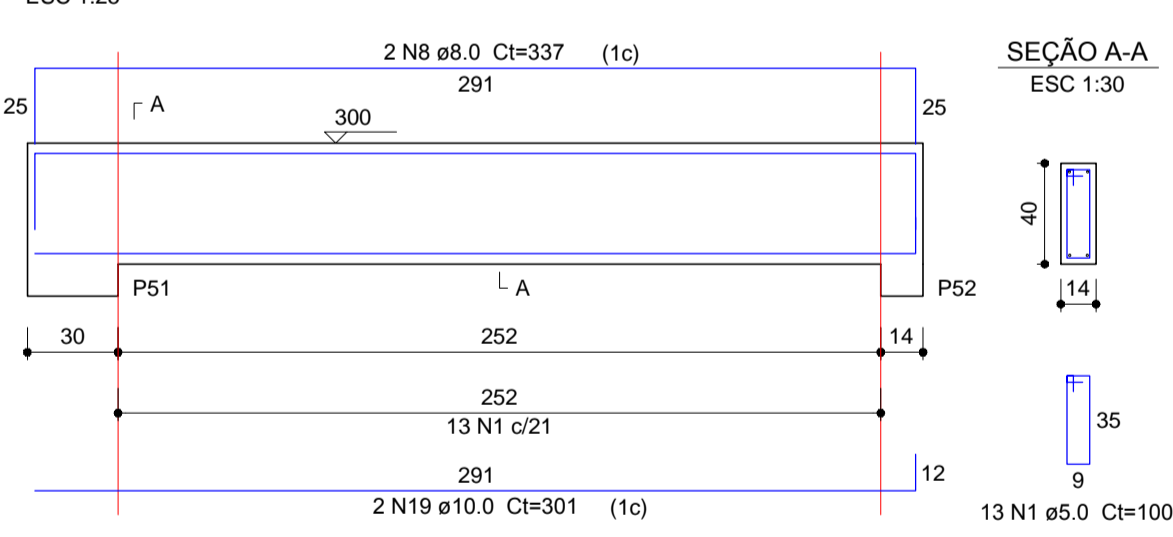
V9 (14 x 40)



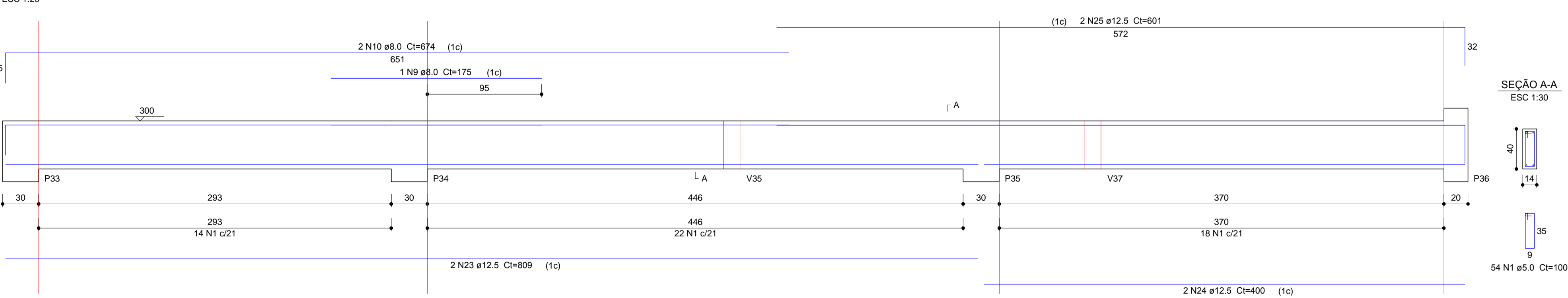
V10 (14 x 40)



V21 (14 x 40)



V15 (14 x 40)





INSTITUTO FEDERAL FARROUPILHA

PRÓ-REITORIA DE ADMINISTRAÇÃO
COORDENAÇÃO DE ENGENHARIA E ARQUITETURA
Rua Esmeralda, 430 - Faixa Nova - Camobi - CEP 97110-747 - Santa Maria - Rio Grande do Sul.
Telefone: (51) 3226-6630

OBRA: **CENTRO DE SAÚDE**

LOCAL: **IF FARROUPILHA - CAMPUS SANTO ÂNGELO**

PROJETO: **ESTRUTURAL**

CONTEÚDO: **ARM. VIGAS COBERTUTA**

PROPRIETÁRIO: **INSTITUTO FEDERAL FARROUPILHA**

RESPONSÁVEL: **ENG. CIVIL LETÍCIA ZORZELA - CREA RS 150530**

ÁREA: **385,57m²**

ESCALA: **Indicada**

DATA: **Julho/2018**

DESENHO: **Iagor**

PRANCHA: **EST 13/23**